

**Contact info**

LASER STAR TECHNOLOGY LTD  
20 HAYWOOD DRIVE  
FLEET  
HAMPSHIRE  
GU52 7RZ  
[WWW.DRIVESMARTPRO.COM](http://WWW.DRIVESMARTPRO.COM)



**DRIVESMART**

**PRO 1**

## Introduction:

Thank you for purchasing the DriveSmart Pro GPS speed camera detector, powered by Laser Elite data.

We hope it gives you a safer and well informed driving experience. With its loud clear voice alerts of pending warning locations and speed limits of those areas it will allow you to drive smart and safely within the speed limits. With the constant threat of Mobile laser as well as fixed camera locations the DriveSmart Pro is a perfect choice. Powered by the Laser Elite GPS database. The most comprehensive in the UK.

Laser Elite has the most up-to-date and sophisticated database of Mobile Laser / Safety Van / Fixed camera locations available with over 10 years of developing laser detection, diffusing and jamming devices. As one of the biggest threats to driving in the UK is mobile laser, Laser Elite was the clear choice for the database supplier.

The biggest advantage of our database is the free for life updates.

## What's included in the box:



- DriveSmart GPS Speed Camera Detector
- In Car Power Lead. 12v Input, 5v Output
- Magnetic Dash Mount
- Download Update Cable

Additionally a DriveSmart hardwire cable is available to purchase separately, as are spare dash mounts and power leads if required.

## Functions of the Drivesmart Buttons:



**MENU BUTTON:** This will scroll through the various option settings and the volume + and – button will allow you to change the settings.

**SPEED CAMERA DETECTION:** Allows you to turn on/off fixed speed camera alerts.

**TRAFFIC LIGHT CAMERA DETECTED:** Turns alerts for red light cameras On/Off.

**SPECS START CAMERA:** Turns alerts for SPECS cameras on. These are the average speed cameras you tend to get on motorway roadworks.

**MOBILE CAMERA AREA:** Turns alerts on for mobile camera zone hot spots where mobile vans and hand held laser guns have been reported operating in the past.

**WARNING DISTANCE INCREASE:** This increases the alert range when you are over 60 MPH, we would suggest having this on if you do a lot of motorway driving.

**CRUISE OVER SPEED WARNING:** Allows you to get an audible alert when travelling over the set speed limit. You can set this between 20 and 90 MPH/KPH to warn you if your speed drifts above your defined limit.

**CONTINUOUS ALARM FOR OVERSPEED WARNING:** Sounds when driving over the speed limit inside an alert area. Can be switched On/Off.

**FINE CORRECTION TO GPS SPEED:** Allow you to adjust your real time GPS to correctly match your speedometer. Your cars speedometer will read higher than your actual speed and at a contact speed the GPS will be showing your correct speed but if you want to adjust this to match your cars speed you can do this here.

**DISPLAY BRIGHTNESS:** Has 3 levels Low / Normal / High

**GPS TIME ADJUSTMENT:** Allows you to adjust + or - GMT on the on-screen display time to allow for British Summer Time and use around the world.

**FACTORY RESET:** Reset your settings back to the factory default ones

**VOLUME + AND -:** Will adjust voice / warning volume level.

**MODE BUTTON:** Change on screen real time display from miles per hour to kilometers per hour.

There is voice confirm of the setting.

## How to Connect to the Car Power Supply with the 5v Adaptor.



### Warning!!!!

The DriveSmart Pro operates on 5volts. Do not connect directly to the car power supply without the supplied power cable. An official DriveSmart hardwire kit is available as an optional extra that will allow direct connection to the vehicle power supply.

## Dash Mounting:



The supplied magnetic dash mount has a 3M sticky pad on the underside. Make sure the surface you apply it to is clean and dust free.

Firmly apply the mount to the dash board and push down for 30 seconds. If installing on a cold surface make sure the 3m sticker is not too cold. If the surface is warm it will help improve the adhesion to the dash board surface.

## Operation:

Once you have connected the DriveSmart to the car power supply you will get the start-up voice message.

The DriveSmart functions via the GPS satellite system, it may take up to 2 minutes to locate and function correctly. It will show the correct time when a satellite signal is acquired and you will hear "GPS Lock" once it has gained enough satellites to accurately pinpoint your location.

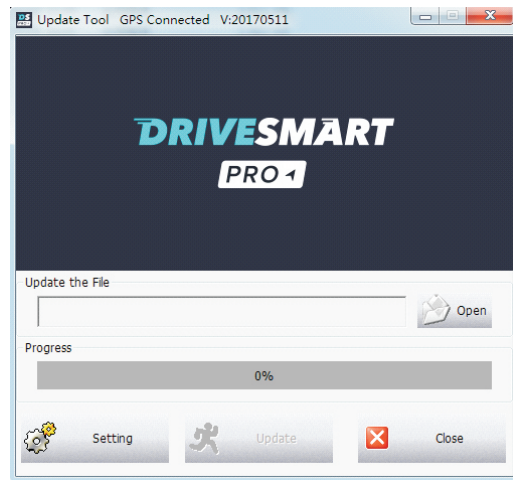
You will only hear a voice alert once you are approaching a location stored in the database. You will be given an audible and visual alert of the approaching type of camera. Normally it includes the speed limit of the speed camera area and also a visual indication of the vehicle distance to the camera. This distance will countdown as you approach.

Mobile laser speed camera data included in the DriveSmart database) Supplied by Laser Elite (will alert to potential laser speed traps. These types of mobile alerts will show you where there has been a potential laser speed camera at some point in time.

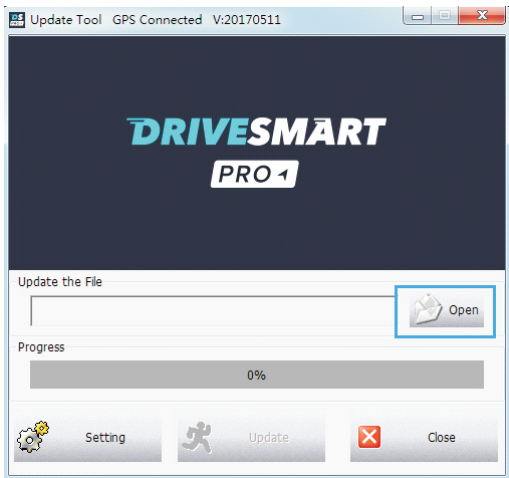
## Updating the Firmware and database from your PC.

Your DriveSmart Pro has been shipped with a current database ready for you to use it out of the box. When you wish to update this database you will need to download the DriveSmart PC update tool from the website [www.drivesmartpro.com](http://www.drivesmartpro.com) along with the latest camera database. It will be named DSXXX.DWN

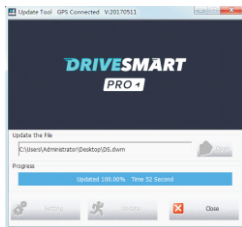
Connect the DriveSmart via the mini USB socket you use to power it in your vehicle on the side of the unit and connect to the USB connector on your PC. The DriveSmart will give a voice alert to confirm it is in PC Update Mode and "d l -" will be displayed on the screen to confirm download is ready. Now open the DriveSmart PC connection program to display the window on your computer.



Click on the OPEN folder and then select the DSXXX.DWN file from whichever location you saved it to on your PC when you downloaded it from the website.



The DriveSmart will now update with the latest database. You will see the progress bar moving until it reaches 100%. It will then be fully updated and the DriveSmart will reboot.



## Product specification:

Model	PRO
Power requirement	GPS Input : DC5V (From Cigarette Lighter Socket) Current: 100mA~300mA
Dimensions	GPS Unit: 89L×56W ×24H mm
Temperature Range	Operating -25°C~85° CStorage -30°C~105°C

## Help/trouble shoot:

No power supply	<ol style="list-style-type: none"> <li>1. Check power</li> <li>2. Check fuse</li> <li>3. Check car charger</li> </ol>
Continuous abnormal alarm	<ol style="list-style-type: none"> <li>1. Restart</li> <li>2. Check signal in car</li> <li>3. Check device is functioning correctly</li> </ol>
No voice alarm but has display alarm	<ol style="list-style-type: none"> <li>1. Check volume setting</li> <li>2. Restart to check again</li> </ol>
No power	<ol style="list-style-type: none"> <li>1. Check the fuse in the adaptor socket</li> <li>2. Check for corrosion of connectors</li> <li>3. Restart to check</li> </ol>
GPS lock is slow or non functioning	<ol style="list-style-type: none"> <li>1. Tall buildings and city driving can cause interference</li> <li>2. It can be normal to take up-to 5 minutes to get 1st GPS lock when unit is new.</li> <li>3. Drive out of tunnel or enclosed area</li> <li>4. Check you do not have an athermic / heatreflective windscreen which generally has a purple tint.</li> </ol>
No alarm of new data points	<ol style="list-style-type: none"> <li>1. Download the newest database</li> <li>2. Report the any new points to DriveSmart</li> </ol>
GPS system failure	<ol style="list-style-type: none"> <li>1. Take note of location</li> <li>2. Restart the GPS</li> <li>3. Report to the place of purchase</li> </ol>