

# **DRIVESMART**

## **ALPHA X**

Contact info  
LASER STAR TECHNOLOGY LTD  
20 HAYWOOD DRIVE  
FLEET  
HAMPSHIRE  
GU52 7RZ  
[WWW.DRIVESMARTPRO.COM](http://WWW.DRIVESMARTPRO.COM)



## Introduction:

Thank you for purchasing the DriveSmart ALPHA X Radar, Laser and GPS speed camera detector, powered by Laser Elite data.

We hope it helps you become a safer and better informed driver. With its loud clear voice alerts of pending warning locations and speed limits of those areas it will allow you to drive smarter and safely within the speed limits. With the constant threat of mobile laser as well as fixed camera locations the DriveSmart ALPHA X is a perfect choice. Powered by the Laser Elite GPS database. The most comprehensive in the UK.

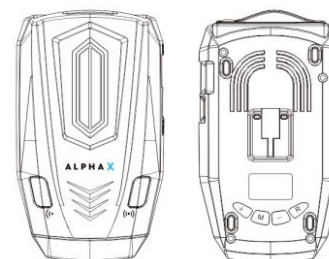
Laser Elite has the most up-to-date and sophisticated database of Mobile Laser / Safety Van / Fixed camera locations available with over 10 years of developing laser detection, diffusing and jamming devices. As one of the biggest threats to driving in the UK is mobile laser, Laser Elite was the clear choice for the database supplier.

The biggest advantage of our database is the free for life updates.

## What's Included in the Box:

- ALPHA X
- Lighter Power Lead
- Update Cable
- Brackets
- Manual

## Functions of the DriveSmart Buttons:



### Top Side(Short Cuts)

(•) Mutes Current Alert

(••) Radar on/off

### Under Side:

**+ and - :** Adjusts menu options up and down Also adjusts volume.

**R:** Changes the on screen real time display from miles per hour to kilometers per hour. There is voice confirm of the setting.

**M:** Menu Button This will scroll through the various option settings as detailed on the following pages. The volume + and – buttons will allow you to change the settings.

**SPEED CAMERA DETECTION:** Allows you to turn on/off fixed speed camera alerts.

**TRAFFIC LIGHT CAMERA DETECTED:** Turns alerts for red light cameras on/off.

**SPECS CAMERA:** Turns alerts for SPECS cameras on. These are the average speed cameras you tend to get on motorway roadworks.

**MOBILE CAMERA AREA:** Turns alerts on for mobile camera zone hot spots where mobile vans and hand held laser guns have been reported operating in the past.

**WARNING DISTANCE:** This can be set from between 200m for mostly city driving to 1100m for mostly motorway use.

**WARNING DISTANCE INCREASE SPEED OVER 60 PER HOUR:** Warning distance will automatically increase by 200m when your vehicle is travelling over 60mph.

**SMART RADAR:** To reduce all false alerts the radar detector will only become active when approaching a radar based camera included in the GPS database like a Gatso or Hadecs camera.

If you select off the radar detector will alert to all K band radar types, this can include traffic lights and automatic doors that function on K band radar.

**CRUISE OVER SPEED WARNING:** Allows you to get an audible alert when travelling over a set speed limit. You can set this between 20 and 90 MPH/KPH to warn you if your speed drifts above your defined limit.

**CONTINUOUS ALARM FOR OVERSPEED WARNING:** Sounds when driving over the speed limit inside an alert area. Can be switched on/off.

**RADAR ANTI-INTERFERENCE :** AI radar filtering for false alerts.

**AUDI Anti-interference identification:** Radar filtering system for avoid the false alerts from the cars which have Blind-spot monitoring system.

**FINE CORRECTION TO GPS SPEED:** Allow you to adjust your real time GPS to correctly match your speedometer. Your cars speedometer will read higher than your actual speed and at a contact speed the GPS will be showing your correct speed but if you want to adjust this to match your cars speedo you can do this here.

**LASER DETECTION ON/OFF:** Lets you choose to have laser detection active.

**K BAND ON/OFF:** Allows you to turn on/off K band radar detection (Not advised in UK as all radar based cameras use K band).

**Ka BAND ON/OFF:** Allows you to turn on/off Ka band radar detection (Ka band is the most commonly used in the EU).

**DARK MODE:** When set on the display will go off after 2 seconds and only illuminate when it gives an alert, therefore turning off the digital speedo if this is a distraction at night.

### **MOTOR WAY MODE:**

Car speed<55 Mph:it will alert all fixed camera

Car speed>55 Mph:it will only alert to camera's over this speed of travel.

**AUTO RANGE:**Adjusts the alert warning distance automatically depending on the speed you are travelling at.

**GPS TIME ADJUSTMENT:** Allows you to adjust + or - GMT on the on-screen display time to allow for British Summer Time and use around the world.

**SPEED DISPLAY:** Lets you choose between MPH and KPH.

**FACTORY RESET:** Reset your settings back to the factory default ones

### **Powering With 12v Adaptor**



### **Installation**

Windscreen Mount



Dash Mount



The supplied windscreen bracket allows for flexible installation into any vehicle.

Make sure the suction cups are moist when applying to the windscreen. You can also bend the bracket to suit the windscreen rake angle.

### Operation:

Once you have connected the DriveSmart ALPHA X to the car power supply, you will get the start-up voice message.

For the DriveSmart ALPHA X to work via the GPS satellite system it may take up-to 2 minutes to locate and function correctly. It will show the correct time when a satellite signal is acquired and you will hear "GPS Lock" once it has gained enough satellites to accurately pinpoint your location.

You will only hear a voice alert once you are approaching a location stored in the database. You will be given an audible and visual alert limit of the speed camera area and a visual indication of the vehicle distance to the camera. This distance will countdown as your approach.

Mobile laser speed camera data is included in the DriveSmart database. Supplied by Laser Elite this will alert you to potential laser speed traps. These types of mobile alerts will show you where there has been a potential laser speed camera at some point in time.

If you feel a speed camera is missing or some other data is incorrect this can be submitted for correction through the DriveSmart website. The database is updated every 1-2 weeks.

### Updating the Firmware and Database from Your PC.

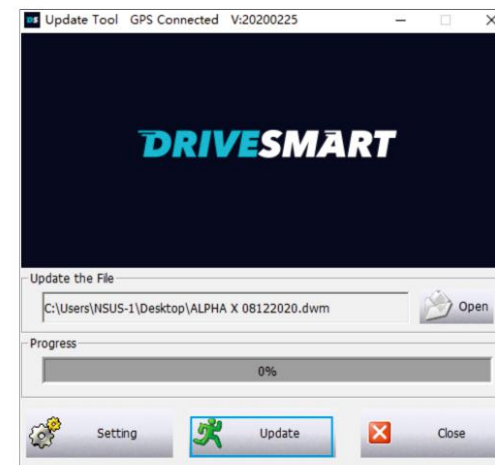
Your DriveSmart Alpha X has been shipped with a current database ready for you to use it out of the box. When you wish to update this database you will need to download the DriveSmart PC update tool from the website [www.drivesmartpro.com](http://www.drivesmartpro.com) along with the latest camera database. It will be named ALPHAXXX.DWN

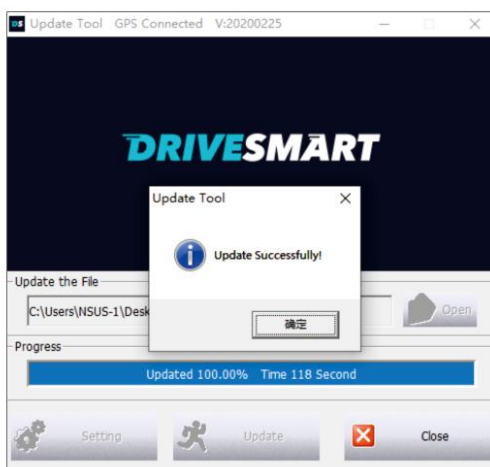
Connect the DriveSmart via the mini USB socket you use to power it in your vehicle on the side of the unit and connect to the USB connector on our PC. ~~The DriveSmart will give a voice alert to confirm it is in PC Update Mode and "DL" will be displayed on the screen to confirm download is ready.~~ Now open the DriveSmart PC connection program to display the window on your computer.



Click on the Open folder and then select the ALPHAXXX.DWM file from whichever location you saved it to on your PC when you download it from the website.

Now click Update. The DriveSmart will now update with the latest database. You will see the progress bar moving until it reaches 100%. It will then be fully updated and the DriveSmart will reboot.





**Product Specification:**

Model	APHLA X
Power Requirement	Input: DC12V-15V Current:200~350mA
Dimensions	116.5x63.05x33.8mm
Temperature Range	Operating -20℃~60℃ Storage -30℃~105℃

**Radar Specification:**

Radar Bands	Frequency	Sensitivity
K BAND	23.9~24.0GHz+/-20MHZ	123+/-dB
KA BAND	34.3~37.0GHz+/-20MHZ	125+/-dB
LASER	800~1100nm	/

**Help / TroubleShooting:**

No Power	<ol style="list-style-type: none"> <li>1. Check power</li> <li>2. Check fuse</li> <li>3. Check car charger</li> </ol>
Continuous Abnormal Alarm	<ol style="list-style-type: none"> <li>1. Restart</li> <li>2. Check signal in car</li> <li>3. Check device is functioning correctly</li> </ol>
No Voice Alarm But Has Display Alarm Works	<ol style="list-style-type: none"> <li>1. Check volume setting</li> <li>2. Restart to check again</li> </ol>
GPS System Failure	<ol style="list-style-type: none"> <li>1. Take note of location</li> <li>2. Restart the GPS</li> <li>3. Report to the place of purchase</li> </ol>
GPS Lock is Slow or Non Functioning	<ol style="list-style-type: none"> <li>1. Tall buildings and city driving can cause interference</li> <li>2. It can be normal to take up-to 5 minutes to get 1<sup>st</sup> GPS lock when unit is new</li> <li>3. Drive out of tunnel or enclosed area</li> <li>4. Check you do not have an athermic / heat reflective windscreen which generally has a purple tint.</li> </ol>
No alarm of speed camera	<ol style="list-style-type: none"> <li>1. Download the newest database</li> <li>2. Report the new points to driveSmart</li> </ol>